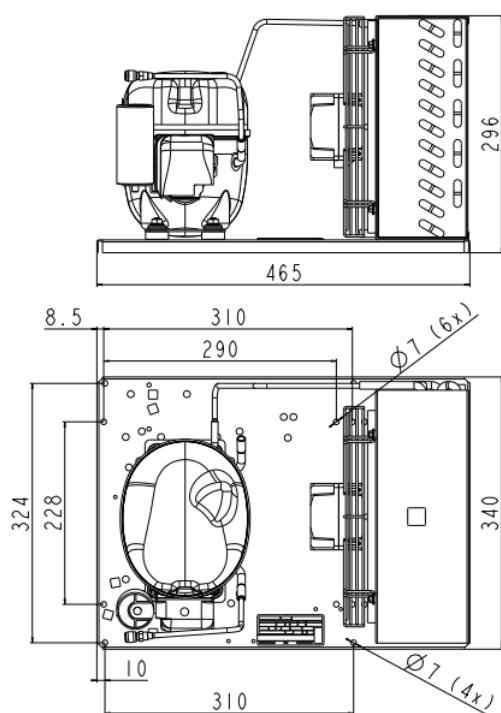


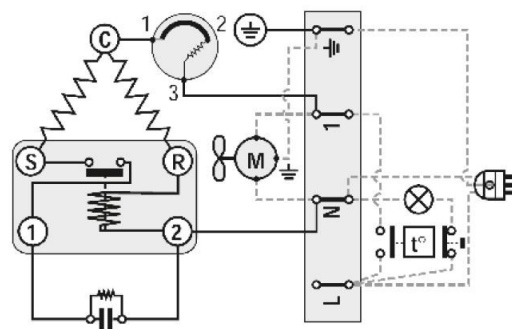
## GENERAL DATA

|                      |                  |
|----------------------|------------------|
| Application:         | M/HBP            |
| Refrigerant:         | R290             |
| Expansion Device:    | C-V              |
| Weight:              | 23.8 kg          |
| Receiver:            | 0 liter          |
| Voltage/Frequency:   | 220 - 240 V 50 ~ |
| Height:              | 23.8 mm          |
| Length:              | 465 mm           |
| Width:               | 340 mm           |
| Institute Approvals: | CE               |

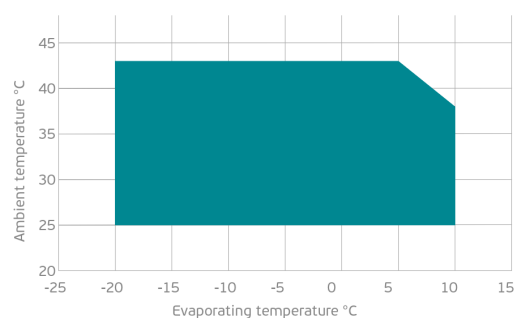
## EXTERNAL DIMENSIONS



## WIRING DIAGRAM



## OPERATING ENVELOPE



## COMPONENTS (SPARE PARTS)

|             |          |             |
|-------------|----------|-------------|
| condenser:  | 3R11T    | 2451206     |
| compressor: | NEK6210U | 862CA51..AM |

|         |                  |            |
|---------|------------------|------------|
| fankit: | IQ3612 254/28/5P | 1996703    |
| elkit:  | ELKOM NEK6210U   | 862CA51N1A |

For additional accessories please contact our technical support



ELECTRICAL DATA

|                              |        |
|------------------------------|--------|
| Motor Type:                  | CSIR - |
| Locked Rotor Amperage (LRA): | 16.1 A |
| Max.Current:                 | 2.95 A |

At maximum evaporating temperature and maximum ambient temperature.

FAN MOTOR

|                 |                       |
|-----------------|-----------------------|
| Number:         | 1 -                   |
| Shaft Power:    | - W                   |
| Air Flow:       | 595 m <sup>3</sup> /h |
| Blade Diameter: | 254 mm                |

PERFORMANCE CURVE DATA

Standard: EN13215-RG20 / return gas 20°C, subcooling 3K

|                              |             |                              |                      |                       |                         | 50 Hz            |
|------------------------------|-------------|------------------------------|----------------------|-----------------------|-------------------------|------------------|
|                              |             | Evaporating Temperature (°C) | Cooling Capacity (W) | Power Consumption (W) | Current Consumption (A) | Efficiency (W/W) |
| 25 °C<br>Ambient Temperature |             | 10°C                         | 1 413                | 399                   | 2.61                    | 3.54             |
|                              |             | 5°C                          | 1 223                | 380                   | 2.54                    | 3.22             |
|                              |             | 0°C                          | 1 047                | 360                   | 2.47                    | 2.91             |
|                              |             | -5°C                         | 887                  | 341                   | 2.40                    | 2.60             |
|                              | Rated point | -10°C                        | 744                  | 322                   | 2.34                    | 2.31             |
|                              |             | -15°C                        | 617                  | 301                   | 2.28                    | 2.05             |
|                              |             | -20°C                        | 509                  | 280                   | 2.21                    | 1.82             |
| 32 °C<br>Ambient Temperature |             | 10°C                         | 1 261                | 448                   | 2.80                    | 2.81             |
|                              |             | 5°C                          | 1 098                | 420                   | 2.69                    | 2.62             |
|                              |             | 0°C                          | 947                  | 393                   | 2.59                    | 2.41             |
|                              |             | -5°C                         | 808                  | 368                   | 2.50                    | 2.19             |
|                              | Rated point | -10°C                        | 681                  | 343                   | 2.41                    | 1.98             |
|                              |             | -15°C                        | 567                  | 319                   | 2.33                    | 1.78             |
|                              |             | -20°C                        | 467                  | 295                   | 2.26                    | 1.59             |
| 43 °C<br>Ambient Temperature |             | 5°C                          | 899                  | 476                   | 2.90                    | 1.89             |
|                              |             | 0°C                          | 777                  | 440                   | 2.76                    | 1.76             |
|                              |             | -5°C                         | 661                  | 408                   | 2.64                    | 1.62             |
|                              | Rated point | -10°C                        | 552                  | 378                   | 2.53                    | 1.46             |
|                              |             | -15°C                        | 449                  | 350                   | 2.43                    | 1.28             |
|                              |             | -20°C                        | 354                  | 324                   | 2.34                    | 1.09             |

