

8 7 6 5 4 3 2 1

MODEL NUMBER
 ZB50KQ/KQE-TFD/TFE/TF5/TF7
 ZB58KQ/KQE-TFD/TFE/TF5/TF7

SPECIFICATIONS	
ES NO.	DESCRIPTION
ES81-159	CLEANLINESS
ES81-250	IDENTIFICATION
ES92-155	CONVERSION-METRIC

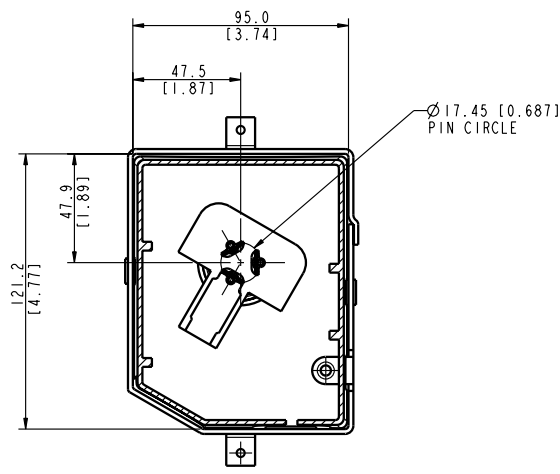
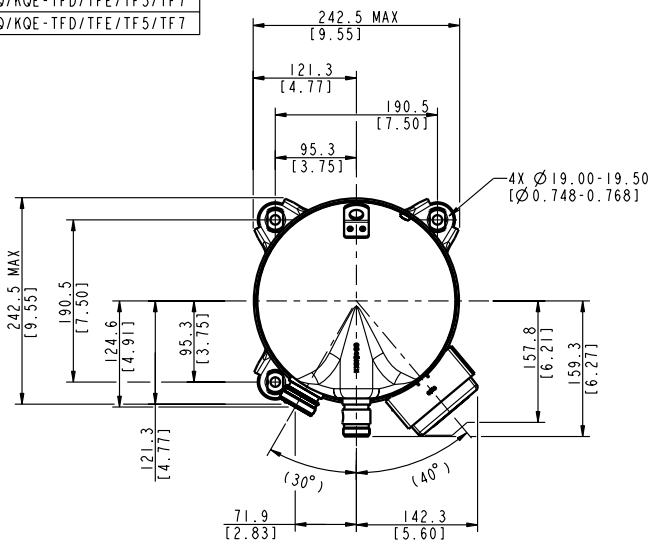
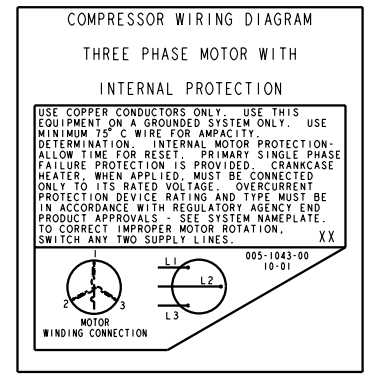
NOTES:
 1 ALL TOLERANCES ±1.5 [0.06] UNLESS OTHERWISE SPECIFIED. DUE TO ACCUMULATED ASSEMBLY TOLERANCES THE LISTED COMPONENTS MAY VARY FROM THE MOUNTING HOLES AS TABULATED.

- 2 SUCTION FITTING ±3.0 [0.12]
- 3 DISCHARGE FITTING ±3.0 [0.12]

GROMMET DUROMETER	4 FOOT KIT
35-45	527-0116-00

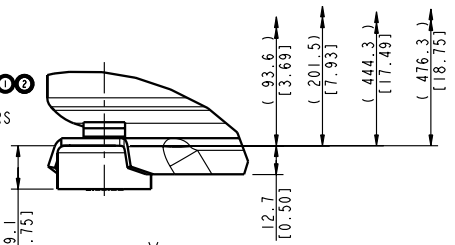
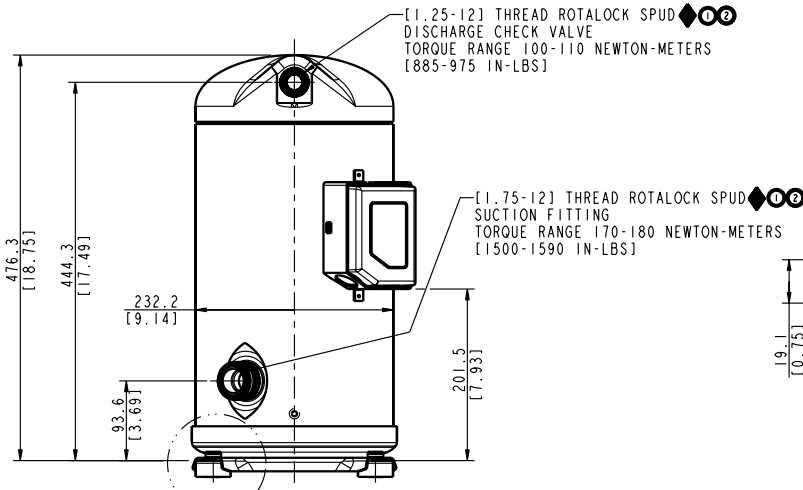


2. MOUNTING KIT:
 3. TUBE ENDS MUST BE PLUGGED.
 4 OIL EQUALIZATION FITTING INCLUDED ON SERVICE AND TANDEM READY MODELS ONLY.



T-BOX LAYOUT STANDARD

SECTION A-A
 SCALE 1:1



SEE DETAIL Y

EMERSON
 Climate Technologies

Copeland

INTERPRET PER ASME Y14.5M-1994 AND EMERSON CLIMATE TECHNOLOGIES, INC. DESIGN STANDARDS_DS2002 DO NOT SCALE DRAWING

THIRD ANGLE PROJECTION

CRITICAL PRODUCT CHARACTERISTIC

UNLESS OTHERWISE SPECIFIED DIMENSIONS ARE MILLIMETER OR (INCH) TOLERANCES:
 1-PLACE ± .04
 2-PLACE ± .04
 ANGULAR ± .04

ECN	REV.	DESCRIPTION	DATE	BY	CHKD	APPR
ECN004392	2	UPDATE TORQUE VALUE FOR SUCTION & DISCHARGE FITTING	09-16-11	PJD	DC	NB
ECN002690	1	CHANGED FORMAT TO CPC FORMAT, ADDED CPC	07-27-10	YSM	LLB	KJR
32-1006-023	0	RELEASED	10-12-06	AMN	DC	NB

ENG NOTICE NO. REV. NO. REVISIONS DATE BY CHKD APPR

15 CONFIDENTIALITY NOTICE
 THIS DRAWING AND INFORMATION CONTAINED HEREIN ARE THE EXCLUSIVE PROPERTY OF EMERSON CLIMATE TECHNOLOGIES, INC. AND SHALL BE RETURNED UPON DEMAND AND SHALL NOT BE REPRODUCED IN WHOLE OR IN PART DISCLOSED TO ANYONE ELSE OR USED, WITHOUT THE WRITTEN CONSENT OF EMERSON CLIMATE TECHNOLOGIES, INC.

MATERIAL SPECIFICATION N/A DRAWN BY AMN SUPERSEDES DWG. NO. / REV. NO. 497-0303-00 / 5 DATE 10-12-06 SCALE 3:8 DATE FORMAT: MM-DD-YY

TITLE REF DWG-WELD COMP ASSM. DRAWING NUMBER SHEET 1 OF 1 497-0571-00 4

UNCONTROLLED - DO NOT MODIFY

COPYRIGHT EMERSON CLIMATE TECHNOLOGIES, INC. - CONFIDENTIAL

8 7 6 5 4 3 2 1