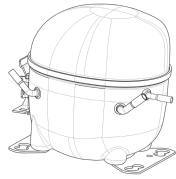


200-230V 50 / 208-230V 60Hz 1~



GENERAL DATA

Application: HBP
Refrigerant: R134a
Evaporating Temperature Range: -15°C to 10°C
Compressor Cooling: Fan
Fan air flow: 520 m³/h
Type: Hermetic reciprocating
Technology Type: On-Off
Expansion Device: Capillary Tube or Expansion Valve
Packing Quantity: Single - 1 pc
Displacement: 9.99 cm³
Horse power: 1.3 hp

Approvals:    

MECHANICAL DATA

Bore: 26.5 mm
Stroke: 18.12 mm
Oil Charge: 350ml +/-15ml
Free Internal Volume: 2.1 cm³
Maximum Recommended Refrigerant Charge: 350 g
Oil Type Configuration: Polyolester
Oil Type Viscosity: ISO22
Compressor pressurization: Dry air charge
Weight: 11.4 kg

ELECTRICAL DATA

Motor Type: CSIR
Starting Torque: HST
Voltage working range at 50 Hz: 180-244 V
Voltage working range at 60 Hz: 187-244 V
Maximum Motor Temperature: 130 °C
Start Winding Resistance: 19.9 Ω (± 10%) at 25°C
Run Winding Resistance: 4.09 Ω (± 10%) at 25°C
Locked Rotor Amperage (LRA): 18 A

MOUNTING ACCESSORIES

	Description	Code
Anchorage:	no	-
Capacitor Bracket:	no	-
Washer:	no	-
Pin:	no	-
Clip:	no	-
Rotolock valve:	no	-
Cover:	yes	2075282
Grommets:	yes	2221011
Sleeves:	yes	2222018
Terminal Board:	yes	1027060
Overload Protector Bracket:	yes	2075299

ELECTRICAL COMPONENTS

	Component type	Description	Code
Start Capacitor:		53-64 MFD 330V	2252346
Starting Device:	Current relay	MTRP-0029-65	2334105
Motor Protection:	External 3/4"	MRT30APK-3259	2319164

EXTERNAL CHARACTERISTICS

Base Plate: European
Tray Holder: No
Height: 206 mm

	Internal Diameter (mm)	Material	Shape
Suction Connector	8.1	Copper	Slanted 42°
Discharge Connector	6.1	Copper	Straight
Process Connector	6.1	Copper	Slanted 42°

RATED POINT DATA

Cooling Capacity (W)	Power Consumption (W)	Current Consumption (A)	Gas Flow Rate (kg/h)	Efficiency (W/W)
±5%	±5%	±5%	±5%	±7%
1 128	477	2.92	24.86	2.36

Test condition: ASHRAE, Fan, Return Gas 35°C, Subcooling 8.3K, Evaporating: 7.2°C, Condensing: 54°C, Ambient: 35°C

PERFORMANCE CURVE DATA

200V 50Hz

Condensing Temperature (°C)	Evaporating Temperature (°C)	Cooling Capacity (W)	Power Consumption (W)	Current Consumption (A)	Gas Flow Rate (kg/h)	Efficiency (W/W)
		±5%	±5%	±5%	±5%	±7%
35°C	10	1 503	352	2.80	28.39	4.27
	5	1 256	329	2.65	23.58	3.81
	0	1 036	307	2.51	19.34	3.37
	-5	841	286	2.38	15.64	2.95
	-10	670	265	2.27	12.42	2.53
	-15	522	245	2.17	9.64	2.13

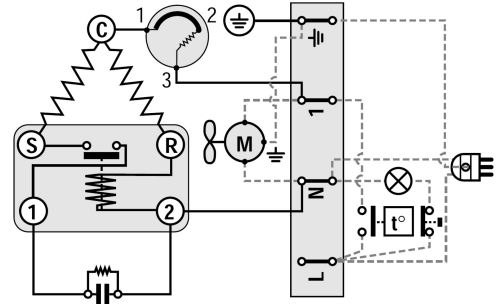
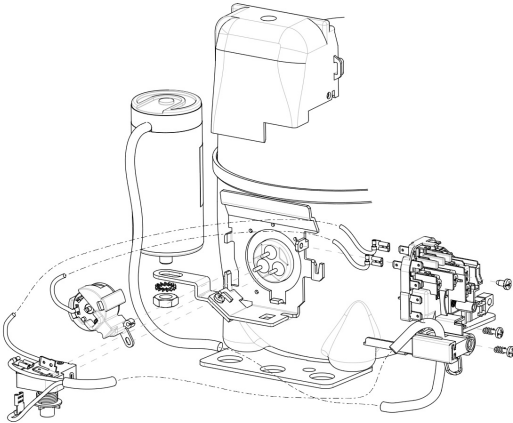
Condensing Temperature (°C)	Evaporating Temperature (°C)	Cooling Capacity (W)	Power Consumption (W)	Current Consumption (A)	Gas Flow Rate (kg/h)	Efficiency (W/W)
		±5%	±5%	±5%	±5%	±7%
45°C	10	1 378	431	2.91	28.19	3.20
	5	1 144	397	2.75	23.24	2.88
	0	937	364	2.60	18.91	2.58
	-5	755	331	2.45	15.16	2.28
	-10	597	300	2.30	11.95	1.99
	-15	463	270	2.17	9.23	1.71

Condensing Temperature (°C)	Evaporating Temperature (°C)	Cooling Capacity (W)	Power Consumption (W)	Current Consumption (A)	Gas Flow Rate (kg/h)	Efficiency (W/W)
		±5%	±5%	±5%	±5%	±7%
55°C	10	1 239	510	3.02	27.68	2.43
	5	1 022	465	2.86	22.67	2.20
	0	832	420	2.68	18.34	1.98
	-5	667	377	2.51	14.62	1.77
	-10	527	335	2.34	11.50	1.57

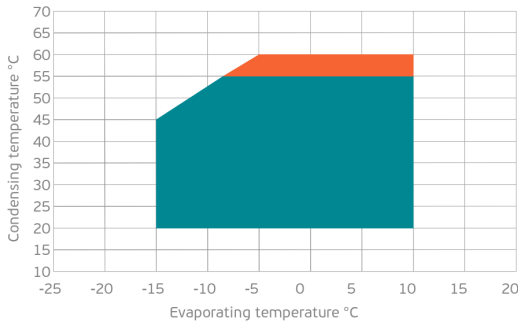
Test condition: ASHRAE, Fan, Return Gas 35°C, Subcooling 8.3K, Ambient: 35°C

ASSEMBLY INSTRUCTION

WIRING DIAGRAM

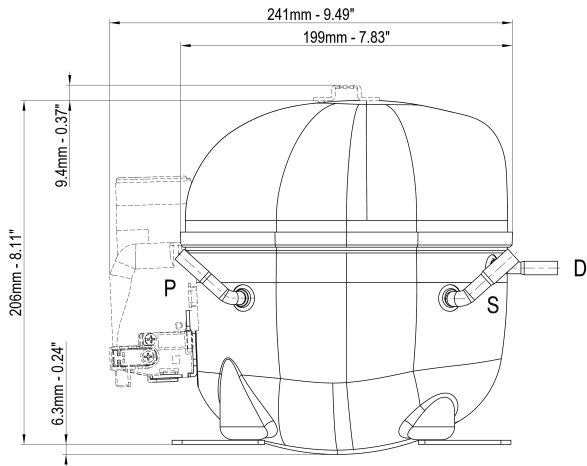


OPERATING ENVELOPE



- Operating Condition
- Transient Condition
- Superheating

NOTE: usage of compressors outside of intended working range cannot make use of the warranty, or should be consulted with Technical support.



	∅ mm	∅ in	Material
S - Suction	8.10 - 8.20	0.32	Cu
P - Process	6.10 - 6.20	0.24	Cu
D - Discharge	6.10 - 6.20	0.24	Cu

