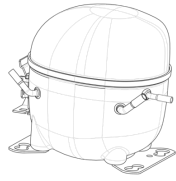


**220-240V 50Hz 1~****GENERAL DATA****Application:** LBP**Refrigerant:** R134a**Evaporating Temperature Range:** -30°C to -5°C**Compressor Cooling:** Fan**Fan air flow:** 520 m<sup>3</sup>/h**Maximum Condensing Pressure - Operating:** 13.92 bar**Maximum Condensing Pressure - Peak:** 15.62 bar**Type:** Hermetic reciprocating**Technology Type:** On-Off**Expansion Device:** Capillary Tube**Packing Quantity:** Single - 1 pc**Displacement:** 12.11 cm<sup>3</sup>**Horse power:** 1/3 hpApprovals:   **MECHANICAL DATA****Bore:** 27.78 mm**Stroke:** 20 mm**Oil Charge:** 350ml +/-15ml**Free Internal Volume:** 2.1 cm<sup>3</sup>**Maximum Recommended Refrigerant Charge:** 350 ml**Oil Type Configuration:** Polyolester**Oil Type Viscosity:** ISO22**Compressor pressurization:** Dry air charge**Weight:** 10.9 kg**ELECTRICAL DATA****Motor Type:** RSIR**Starting Torque:** LST**Voltage working range at 50 Hz:** 198-254 V**Maximum Motor Temperature:** 130 °C**Start Winding Resistance:** 31.5 Ω (± 10%) at 25°C**Run Winding Resistance:** 6.4 Ω (± 10%) at 25°C**MOUNTING ACCESSORIES**

	Description	Code
<b>Anchorage:</b>	no	-
<b>Overload Protector Bracket:</b>	no	-
<b>Capacitor Bracket:</b>	no	-
<b>Washer:</b>	no	-
<b>Pin:</b>	no	-
<b>Clip:</b>	no	-
<b>Rotolock valve:</b>	no	-
<b>Cover:</b>	yes	2075282
<b>Grommets:</b>	yes	2221011
<b>Sleeves:</b>	yes	2222018
<b>Terminal Board:</b>	yes	1027060

**ELECTRICAL COMPONENTS**

	Component type	Description	Code
<b>Starting Device:</b>	Current relay	MTRPH-0028-60	2339107
<b>Motor Protection:</b>	External	4TM757NFBYY-153	2316018

**EXTERNAL CHARACTERISTICS****Base Plate:** European**Tray Holder:** No**Height:** 200 mm

	Internal Diameter (mm)	Material	Shape
<b>Suction Connector</b>	8.1	Copper	Slanted 42°
<b>Discharge Connector</b>	6.1	Copper	Straight
<b>Process Connector</b>	6.1	Copper	Slanted 42°



## RATED POINT DATA

Cooling Capacity (W)	Power Consumption (W)	Current Consumption (A)	Gas Flow Rate (kg/h)	Efficiency (w/W)
±5%	±5%	±5%	±5%	±7%
95	245	1.48	6.31	0.39

**Test condition:** ASHRAE, Fan, Return Gas 32.2°C, Evaporating: -23.3°C, Condensing: 54°C, Ambient: 32.2°C, Liquid: 32.2°C

## PERFORMANCE CURVE DATA

**220V 50Hz**

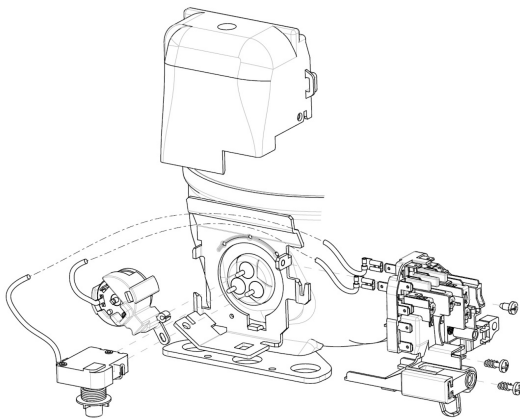
Condensing Temperature (°C)	Evaporating Temperature (°C)	Cooling Capacity (W)	Power Consumption (W)	Current Consumption (A)	Gas Flow Rate (kg/h)	Efficiency (w/W)
		±5%	±5%	±5%	±5%	±7%
<b>35°C</b>	-5	828	355	2.10	16.26	2.33
	-10	680	315	1.94	13.29	2.16
	-15	548	279	1.78	10.67	1.96
	-20	432	247	1.62	8.40	1.75
	-25	334	218	1.46	6.46	1.53
	-30	251	194	1.31	4.86	1.30

Condensing Temperature (°C)	Evaporating Temperature (°C)	Cooling Capacity (W)	Power Consumption (W)	Current Consumption (A)	Gas Flow Rate (kg/h)	Efficiency (w/W)
		±5%	±5%	±5%	±5%	±7%
<b>45°C</b>	-5	800	381	2.19	15.70	2.10
	-10	652	337	2.00	12.74	1.94
	-15	521	296	1.81	10.16	1.76
	-20	409	259	1.62	7.94	1.58
	-25	314	226	1.43	6.08	1.39
	-30	236	196	1.24	4.57	1.20

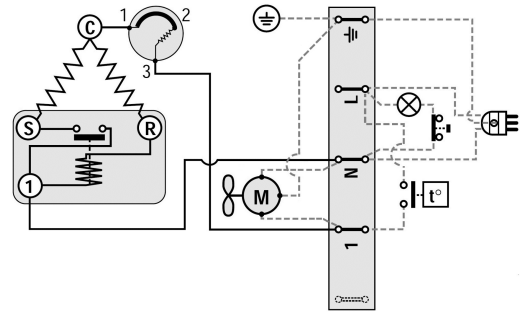
Condensing Temperature (°C)	Evaporating Temperature (°C)	Cooling Capacity (W)	Power Consumption (W)	Current Consumption (A)	Gas Flow Rate (kg/h)	Efficiency (w/W)
		±5%	±5%	±5%	±5%	±7%
<b>55°C</b>	-5	772	407	2.29	15.16	1.90
	-10	625	358	2.07	12.21	1.75
	-15	496	312	1.85	9.66	1.59
	-20	386	271	1.63	7.49	1.42
	-25	294	233	1.41	5.70	1.26

**Test condition:** ASHRAE, Fan, Return Gas 32.2°C, Evaporating: -23.3°C, Condensing: 54°C, Ambient: 32.2°C, Liquid: 32.2°C

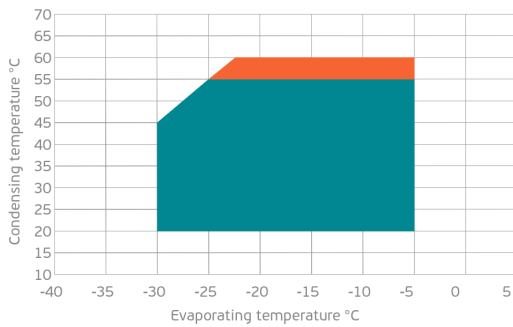
## ASSEMBLY INSTRUCTION



## WIRING DIAGRAM

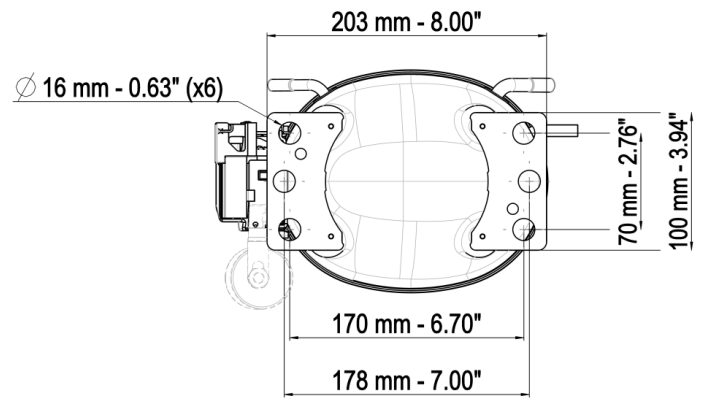
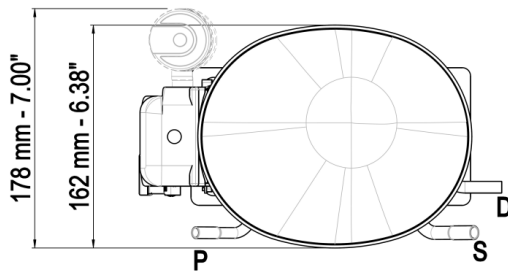
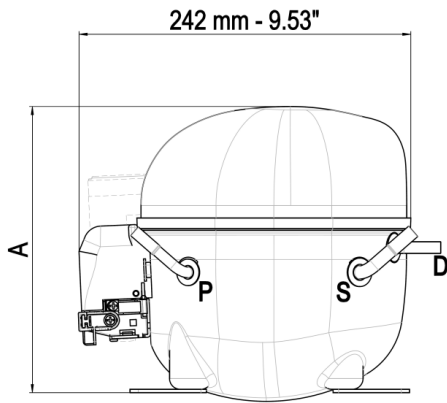


## OPERATING ENVELOPE



- Operating Condition
- Transient Condition
- Superheating

**NOTE:** usage of compressors outside of intended working range cannot make use of the warranty, or should be consulted with Technical support.



DWG02	∅ mm	∅ in	material
S - Suction	6.10 - 6.20	0.24	Cu
P - Process	6.10 - 6.20	0.24	Cu
S - Discharge	4.86 - 5.02	3/16	Cu

DWG03	∅ mm	∅ in	material
S - Suction	8.10 - 8.20	0.32	Cu
P - Process	6.10 - 6.20	0.24	Cu
S - Discharge	6.10 - 6.20	0.24	Cu