

MODEL NUMBER
ZP67KCE-TFD/TFE/TF5
ZP72KCE-TFD/TFE/TF5
ZP76KCE-TFD/TFE/TF5
ZP83KCE-TFD/TFE/TF5

NOTES:

1 ALL TOLERANCES ± 1.5 [0.06] UNLESS OTHERWISE SPECIFIED.

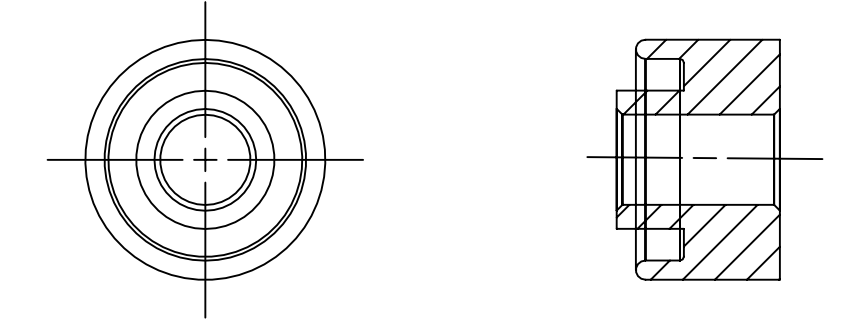
DUE TO ACCUMULATED ASSEMBLY TOLERANCES THE LISTED COMPONENTS MAY VARY FROM THE MOUNTING HOLES AS SHOWN BELOW:

◆ ALL FITTINGS : ± 3.0 [0.12]

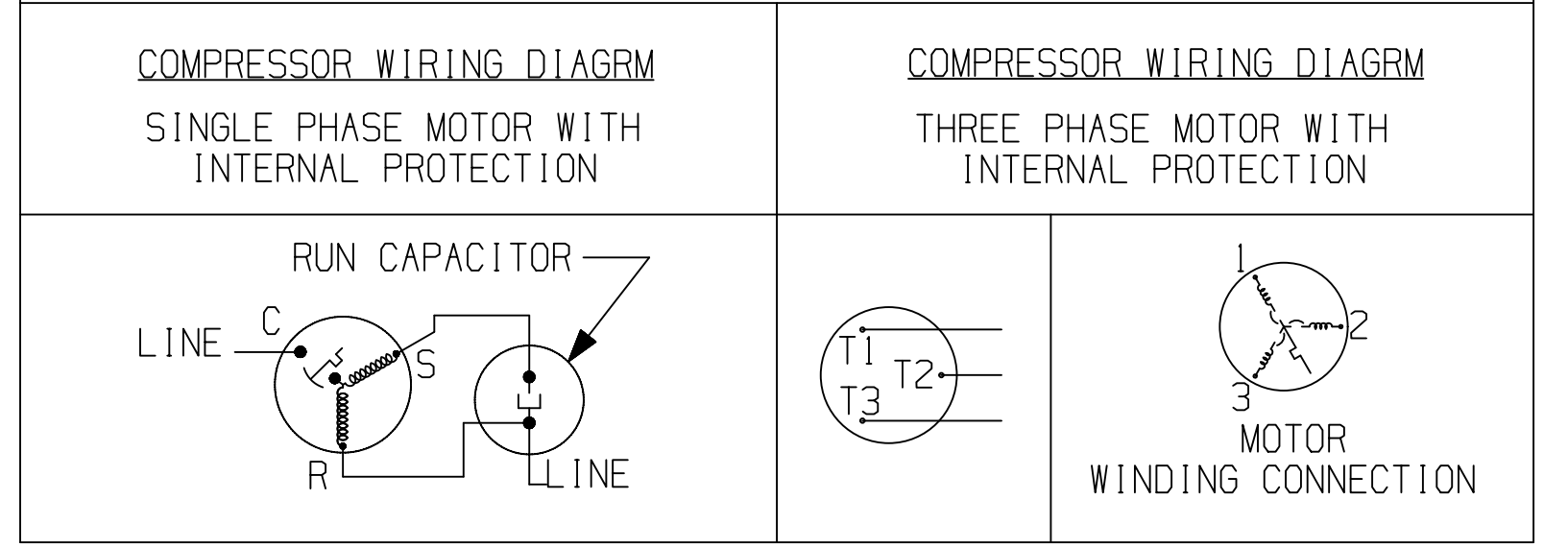
2. TUBE ENDS MUST BE PLUGGED.

3. MOUNTING KIT:

GROMMET DUROMETER	4 FOOT KIT
STEEL	527-0181-00



USE COPPER CONDUCTORS ONLY. USE MINIMUM 75° C WIRE FOR AMPACITY DETERMINATION. INTERNAL MOTOR PROTECTION - ALLOW TIME FOR RESET. OVERCURRENT PROTECTION DEVICE RATING AND TYPE MUST BE IN ACCORDANCE WITH REGULATORY AGENCY END PRODUCT APPROVALS - SEE SYSTEM NAMEPLATE. CRANKCASE HEATER, WHEN APPLIED, MUST BE CONNECTED ONLY TO ITS RATED VOLTAGE. TO CORRECT IMPROPER ROTATION OF THREE PHASE MODELS, SWITCH ANY TWO SUPPLY LINES. REFER TO THE APPLICABLE SYSTEM WIRING DIAGRAM.



INTERPRET PER ASME Y14.5M-1994 AND EMERSON DESIGN STANDARDS DS2002

DO NOT SCALE DRAWING

CRITICAL PRODUCT CHARACTERISTICS

UNLESS OTHERWISE SPECIFIED DIMENSIONS ARE MILLIMETER OR ( INCH )

TOLERANCES:  
1-PLACE : N/A  
2-PLACE : N/A  
ANGULAR : 0.5°

ECN309006	0	RELEASED	10-11-18	VPV/PBM
ENG NOTICE NO.	REV. NO.	REVISIONS	DATE	BY
CONFIDENTIALITY NOTICE				
THIS DRAWING AND INFORMATION CONTAINED HEREIN ARE THE EXCLUSIVE PROPERTY OF EMERSON CLIMATE TECHNOLOGIES, INC AND/OR ITS AFFILIATES (COLLECTIVELY "EMERSON") AND SHALL BE RETURNED UPON DEMAND AND SHALL NOT BE REPRODUCED IN WHOLE OR IN PART, DISCLOSED TO ANYONE ELSE OR USED, WITHOUT THE WRITTEN CONSENT OF EMERSON.				
MATERIAL SPECIFICATION		DRAWN BY	SUPERSEDES DWG NO / REV NO	DATE
N/A		VPV	497-1851-00 / 003	10-11-18
TITLE		SCALE	DATE	DRAWING NUMBER
REF DWG-WELD COMP ASSM		1:2	10-11-18	497-3177-00
SHEET 1 OF 1			SIZE	4